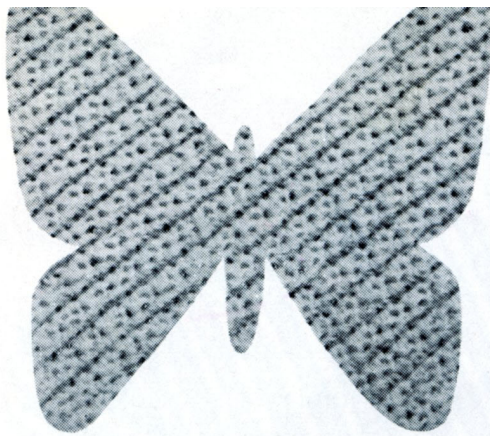


## Blazer Set Free Vintage Crochet Pattern



Find more patterns at [donnacrochetdesigns.com](http://donnacrochetdesigns.com)



Start your pride-and-joy  
off on the right foot with  
up-to-the-minute baby fashions . . .

## C-337 . . . . . Blazer Set

Illustrated on Page 19

Infant Sizes 6 months, 1 and 2

**COATS & CLARK'S RED HEART BABY WOOL, 3 Ply, Art. E.284, or NYLON, Art. E.268:** 3 skeins (2 oz. "Tangle-Proof" Pull-Out Skeins) of No. 1 White for all sizes.

**Clark's O.N.T. Plastic Crochet Hook No. 3.**  
8 buttons . . . 2½ yards red bias binding . . . ½ yard elastic, ¼ inch wide.

**GAUGE:** 6 sts make 1 inch; 6 rows make 1 inch.

**BLOCKING MEASUREMENTS:**

Sizes	6 months	1	2
<b>Sacque</b>			
Chest	18"	20"	22"
Length from shoulder to lower edge	9"	10"	10½"
Length of sleeve seam	6"	6½"	6½"
<b>Pants</b>			
Waist	18"	19½"	20½"
Length from top edge to crotch	9½"	9¾"	10"

Directions are given for Size 6 months. Changes for Sizes 1 and 2 are in parentheses.

**SACQUE**

**BACK . . .** Starting at lower edge, ch 55 (61, 67) to measure 10 (11, 12) inches. **1st row:** Sc in 2nd ch from hook, \* half dc in next ch, sc in next ch. Repeat from \* across—54 (60, 66) sts. Ch 1, turn. **2nd row:** \* Sc in next half dc, half dc in next sc. Repeat from \* across. Ch 1, turn. Repeat 2nd row until piece measures 6 (6½, 7) inches; ch 37 (41, 41) for Sleeve. Drop yarn. Attach another ball at opposite end of last row and ch 36 (40, 40) for other Sleeve. Break off. Pick up dropped yarn and make

sc in 2nd ch from hook, \* half dc in next ch, sc in next ch. Repeat from \* across ch, then continue in pattern across Back and other ch. Ch 1, turn. Work in pattern until piece measures from first row of sleeve shaping 3 (3½, 3½) inches. Break off.

**RIGHT FRONT . . .** Starting at lower edge, ch 33 (37, 41) to measure 6 (7, 7½) inches. Work in pattern until there are 32 (36, 40) sts on row. Work in pattern as for Back until piece measures 5 (5½, 6) inches in all, ending at neck edge. Keeping continuity of pattern, dec 1 st at neck edge on next row and every other row thereafter until 12 (13, 13) sts in all have been decreased—to dec 1 st, work off 2 sts as 1 st;

**AT THE SAME TIME**

when piece measures 1 inch from first row of neck shaping, ending at side edge, shape sleeve as follows: Ch 37 (41, 41), turn. **Next row:** Sc in 2nd ch from hook, half dc in next ch. Continue to work in pattern across ch and sts to end of row. Ch 1, turn. Continue in pattern without decreasing at sleeve edge and continuing to dec at neck edge as before, until piece measures 3 (3½, 3½) inches from first row of sleeve shaping. Break off.

With pins, mark the position of 4 buttons on Right Front, having the first pin mark ½ inch up from lower edge and last pin mark 1 inch down from first row of neck shaping.

**LEFT FRONT . . .** Work exactly as for Right Front, making a buttonhole ½ inch in from front edge opposite each pin mark. Make a buttonhole as follows: **1st row:** Ch 2, skip 2 sts, work in pattern across. **2nd row:** Work in pattern across, including ch sts.

Block to measurements. Sew side, shoulder and sleeve seams. Sew bias tape all around sacque and cuff edges. Sew buttons in place.

**PANTS**

**BACK . . . 1st row:** Starting at top edge, make a chain to measure 9½ (10, 10½) inches. **2nd row:** Sc in 2nd ch from hook, sc in each ch across, having an even number of sc on row. Ch 1, turn. Repeat 2nd row until piece measures 1¼ inches. Now work in pattern, increasing 1 st at both ends of row every inch 3 times, being careful to keep continuity of pattern. Work without increasing until piece measures 6¾ inches in all.

**To Shape Crotch: 1st row:** Work in pattern across, decreasing 2 sts at both ends. Ch 1, turn. **2nd row:** Work in pattern across, decreasing 1 st at both ends. Ch 1, turn. Repeat first and 2nd rows alternately 9 (9, 11) times more. Work without decreasing for ½ inch. Break off.

**FRONT . . .** Work as for Back until last dec row of crotch has been completed. **Next row:** Work in pattern across, making 4 buttonholes evenly spaced across row. Now continue in pattern for 2 more rows. Break off.

Block to measurements. Sew side seams.

**BEADING . . .** Attach yarn to inside of Pants, 3 rows down from top edge, sc in same place, \* ch 3, skip 2 sc, sc in next sc 2 rows below, ch 3, skip 2 sc, sc in next sc 2 rows above. Repeat from \* around. Join.

Lace elastic through Beading and fasten securely. Sew bias binding all around lower edges of pants and legs. Sew buttons in place.